

# AQUA COOLER®



# IBWR

WALL RECESSED

**MAINS  
CONNECTED  
WALL  
RECESSED  
UNIT**

## MODEL

IN-BUILT  
WALL RECESSED  
SPACE SAVING  
DRINKING FOUNTAIN

## FEATURES

Full Stainless Steel Recessed Cabinet

Heavy Duty Water Cooler System

Non-Drip Glass Filler and Bubbler

A stylish, unobtrusive unit

Space saving, flush mounted

Lockable service door

PROUDLY AUSTRALIAN MADE

## CONTACT

AQUA COOLER PTY LIMITED  
161 ORCHARD ROAD  
CHESTER HILL NSW 2162 AUSTRALIA

TEL: (02) 9721 9333  
FAX: (02) 9721 9344

EMAIL: [sales@aquacooler.com.au](mailto:sales@aquacooler.com.au)  
[coolers@aquacooler.com.au](mailto:coolers@aquacooler.com.au)

DRINKING WATER ..... CHILLED TO PERFECTION  
Visit [www.aquacooler.com.au](http://www.aquacooler.com.au)

# AQUA COOLER®

## WATER RESERVOIR

The WR45 refrigeration unit has a 2 litre storage tank to cope with periods of peak demand. The tank is hard drawn copper, tin plated for your safety. The IBWR will provide a peak chilling capacity of 26 l.p.h.

## REFRIGERATION

The WR45 system uses 275gms of refrigerant R22 which is non-toxic, non-flammable and environmentally sympathetic.

## WATER FLOW CONTROL

The bubbler is rated to supply an adjustable flow of 1.7 l.p.m. at any mains pressure between 140 and 700kPa.

## WATER CONNECTIONS

Water Inlet – 6.4mm (1/4") copper tube  
 Drain – 40mm MBSP

## TEMPERATURE CONTROL

The thermostat is factory pre-set.

## COMPRESSOR

1/4 hp capacity, 370 watts.  
 The compressor is hermetically sealed for silent running.

## CONDENSER

The condenser is of copper tube and expanded aluminium fin.

## ELECTRICAL

The refrigeration unit is fitted with a 7.5 amp, 2 metre, 3 pin house cable. The full load current is 2.69 amps.

## PERFORMANCE TO ARI 1010-94 STANDARD

Water Inlet – 26.7°C  
 Water Outlet – 10°C  
 Ambient Air – 32.2°C.

## WEIGHT – PACKED

54kgs

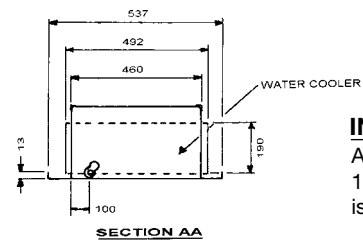
## DIMENSIONS – PACKED

Width – 600mm      Container Capacity  
 Depth – 300mm     20ft – 65 units  
 Height – 1600mm   40ft – 137 units

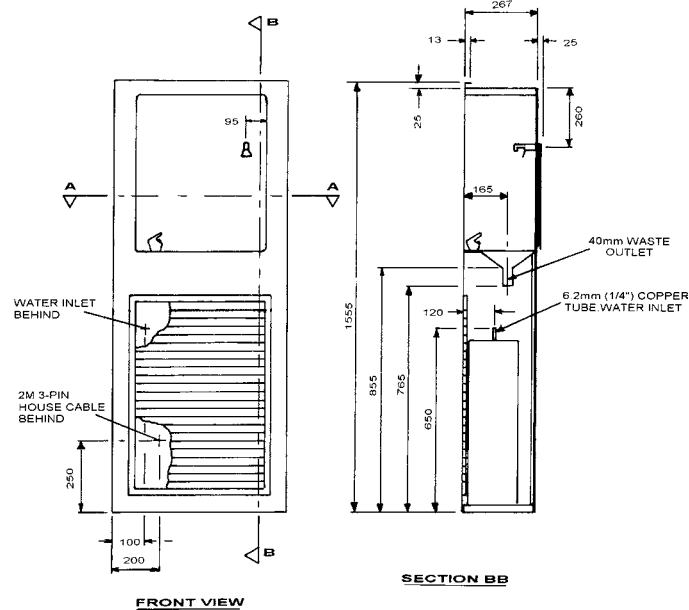


# IBWR WALL RECESSED

## MAINS CONNECTED WALL RECESSED UNIT



**INSTALLATION NOTE:**  
 A wall opening of 1540 H / 510 W / 300 D. is required.



## DISTRIBUTED BY

## OTHER FEATURES

### WARRANTY

Comprehensive 12 month warranty.  
 Compressor is covered for replacement for 5 years.

### SERVICE

The front panel removes to give instant access to all components and controls. The unit can be serviced without disconnecting the plumbing.

### INSTALLATION NOTE

With water pressure above 700kpa a pressure reduction valve should be fitted.